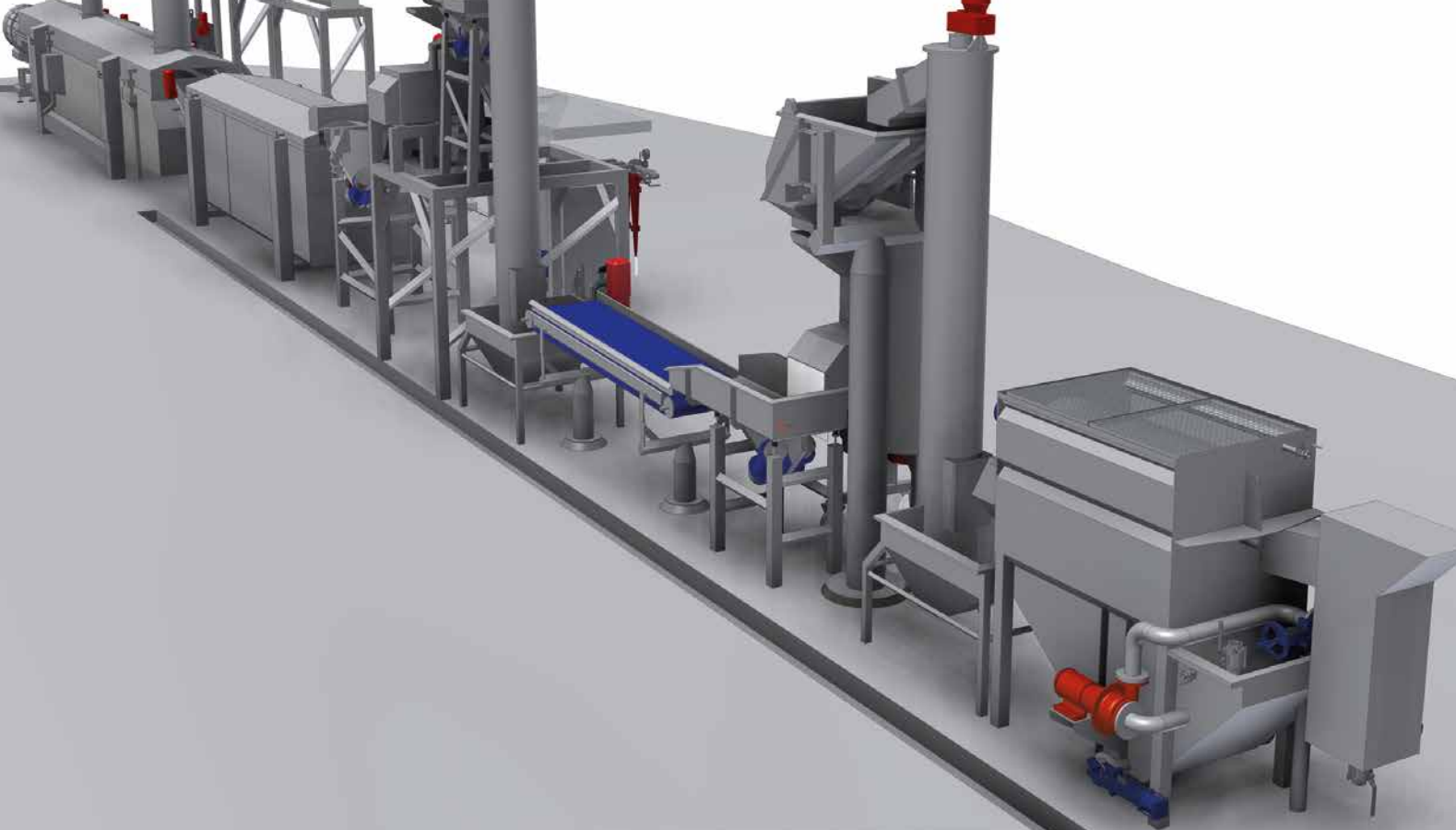


# Kiremko Project Development



Proven process knowledge for your project



## Kiremko Project Development

Fact  
finding

Basic  
design

Detailed  
engineering

Project  
proposal

Project  
execution

Start-up  
&  
Production

## Kiremko Project Development

In order to make the right decisions concerning your operational management, you need specialised information and reliable data. Whether you are facing the construction of a new plant or an upgrade of your existing process line, the information you need is likely to go beyond the specifications of machines or processing lines. Kiremko Project Development offers you the necessary knowledge and experience. Including knowledge of potato characteristics and processing, specific location features worldwide and knowledge of the desired end product. We also offer you an insight into profit-raising aspects, such as technology, energy & the environment, and logistics.

*Kiremko Project Development brings specialists together, with your business performance in mind*

## Your success is our goal

You want a return on your investment. To achieve this, Kiremko Project Development will provide you with access to the best possible data as early as possible in the decision-making process. We bring our specialists together and use the starting points of your project as the basis for successful operational management. Our engineers and project managers will go into the details of your project, before you even order a machine.

## *Establish the feasibility of your plan*

## Your value is our knowledge

Based on years of international experience, Kiremko Project Development will provide well-founded advice with objective results. The feasibility of your plan will be clearly mapped and based on your wishes and resources to enable you to determine the profitability of the plan.

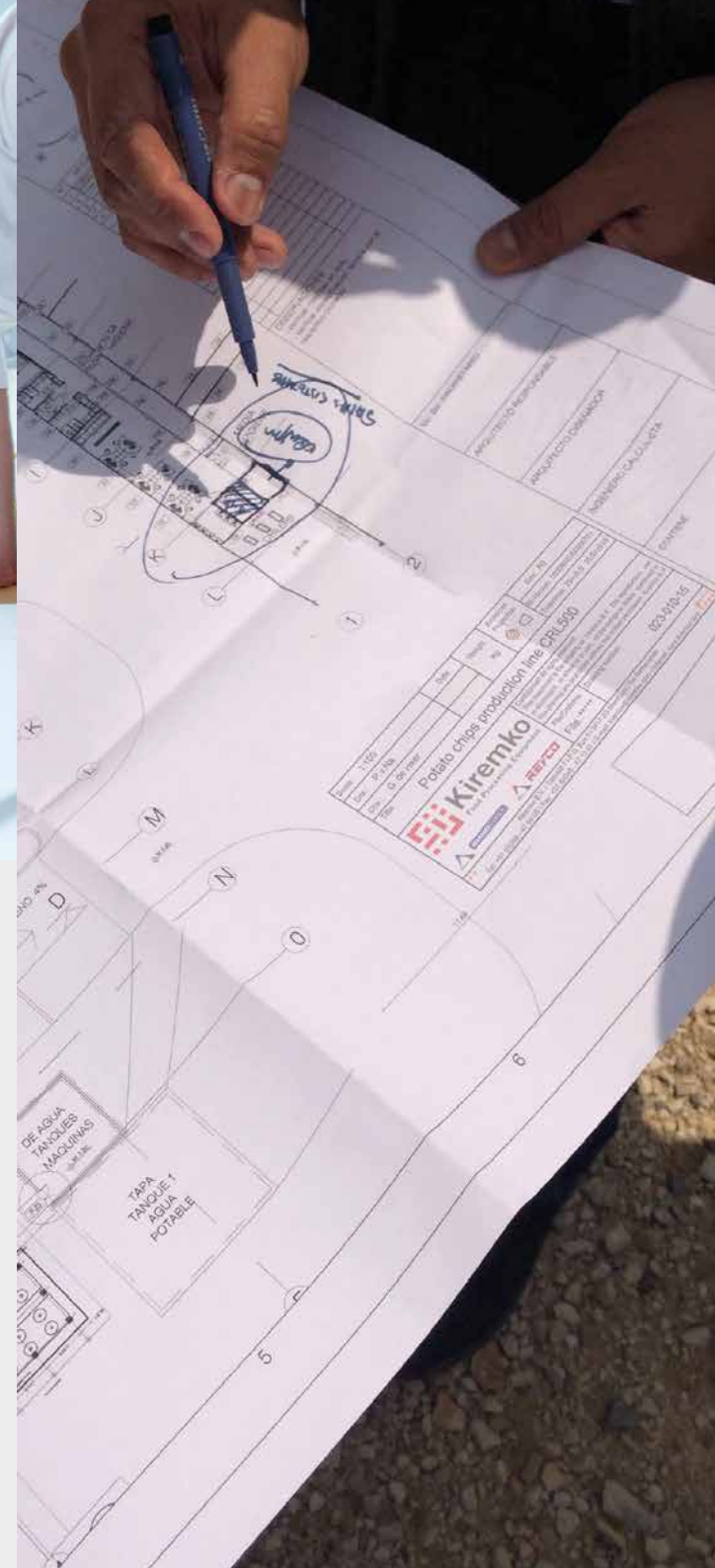
## Kiremko Project Development for a successful project

- When you wish to gain access to optimum data for good decision making
- When you would rather gain a return on investment than just invest in stainless steel
- When you have a clear vision about your operational management



## A valuable investment

A well-founded advice will provide you with the basis for optimal return. Furthermore, it will accelerate follow-up activities and reduce the risk of inaccuracies and additional costs. We will gladly balance your investment in Kiremko Project Development with the price we charge for our machines. This way, your investment will be recovered and you can be sure that the choices you make are based on your profitability.



Destoning  
Washing  
Peeling  
Cutting  
Blanching  
Cooking  
Drying  
Forming  
Frying  
Cooling  
Freezing  
Pasteurizing  
Sorting  
Packaging  
Handling

